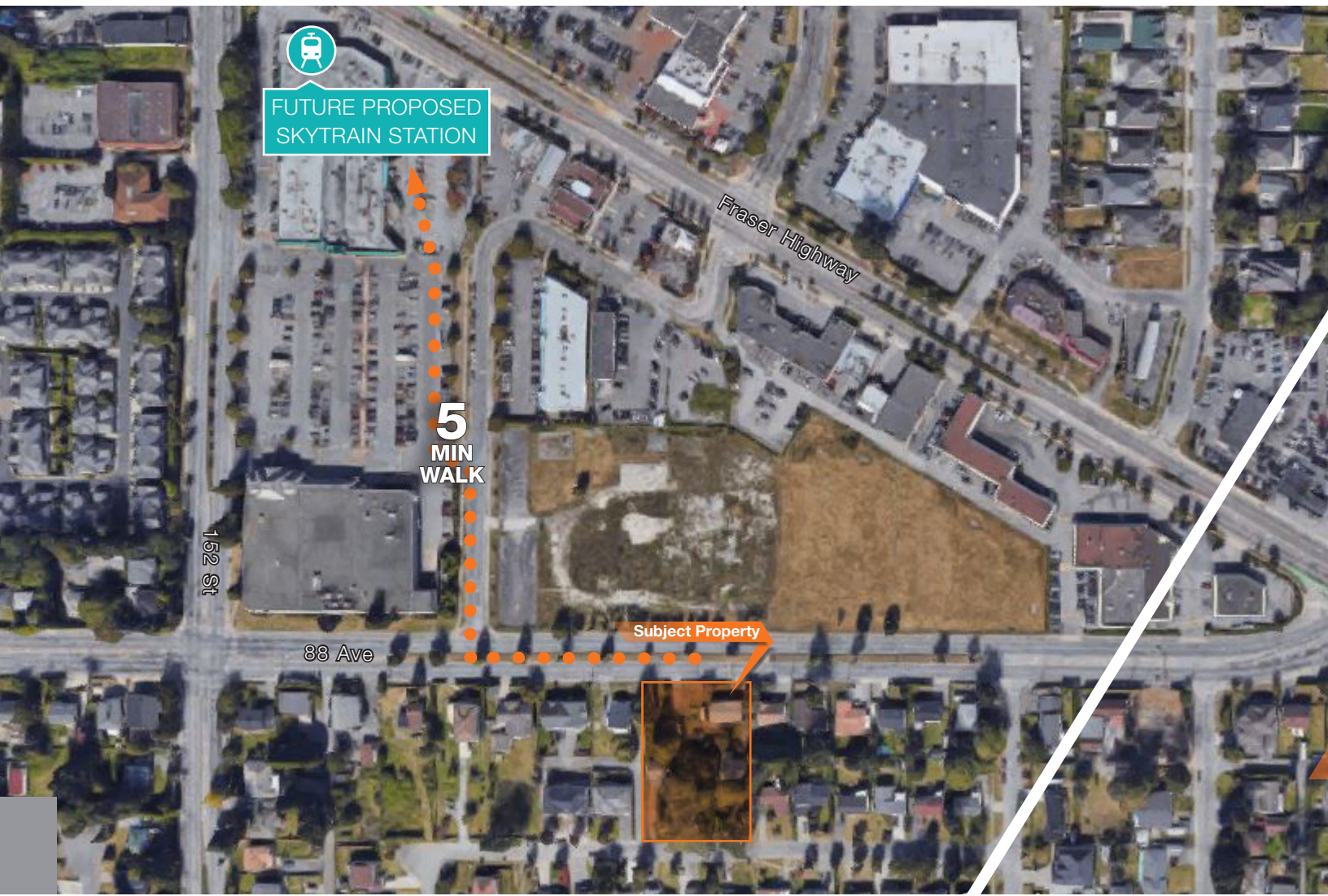


FOR SALE

LONDONPACIFIC
REDEFINING LAND



TRANSIT-ORIENTED | FLEETWOOD

OFF MARKET
**1 ACRE FUTURE
DEVELOPMENT
OPPORTUNITY**



Jerry H. Lee PREC*
604.229.5888
Jerry@londonpacific.ca

Current Zoning

RF – Single Family Residential Zone

Proposed OCP Designation

TBD – West Fleetwood

Proposed Plan

Gross Site Area

± 42,340 sqft (0.97 Acres)

Site Dimensions

± Frontage 161 FT x
Depth 250 FT

PRICE

Contact agent

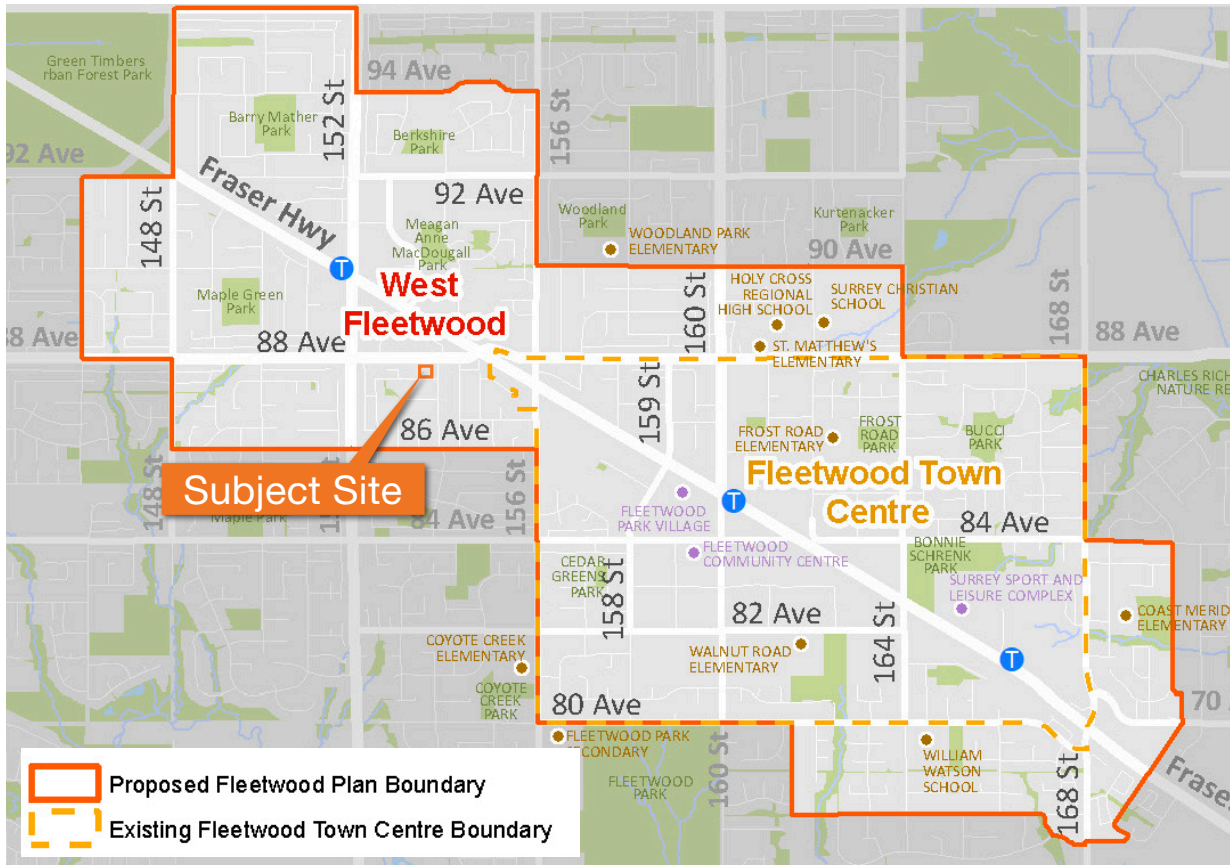


THE SITE

DEVELOPMENT OPPORTUNITY

The site boasts its proximity to the future skytrain station and its redevelopment potential while providing the economy of scale for developers. One of the last few remaining 1 acre property in Fleetwood, Surrey.

5-minute walk to Future Skytrain, Safeway, Shoppers Drug Mart, BC Liquor, Scotiabank



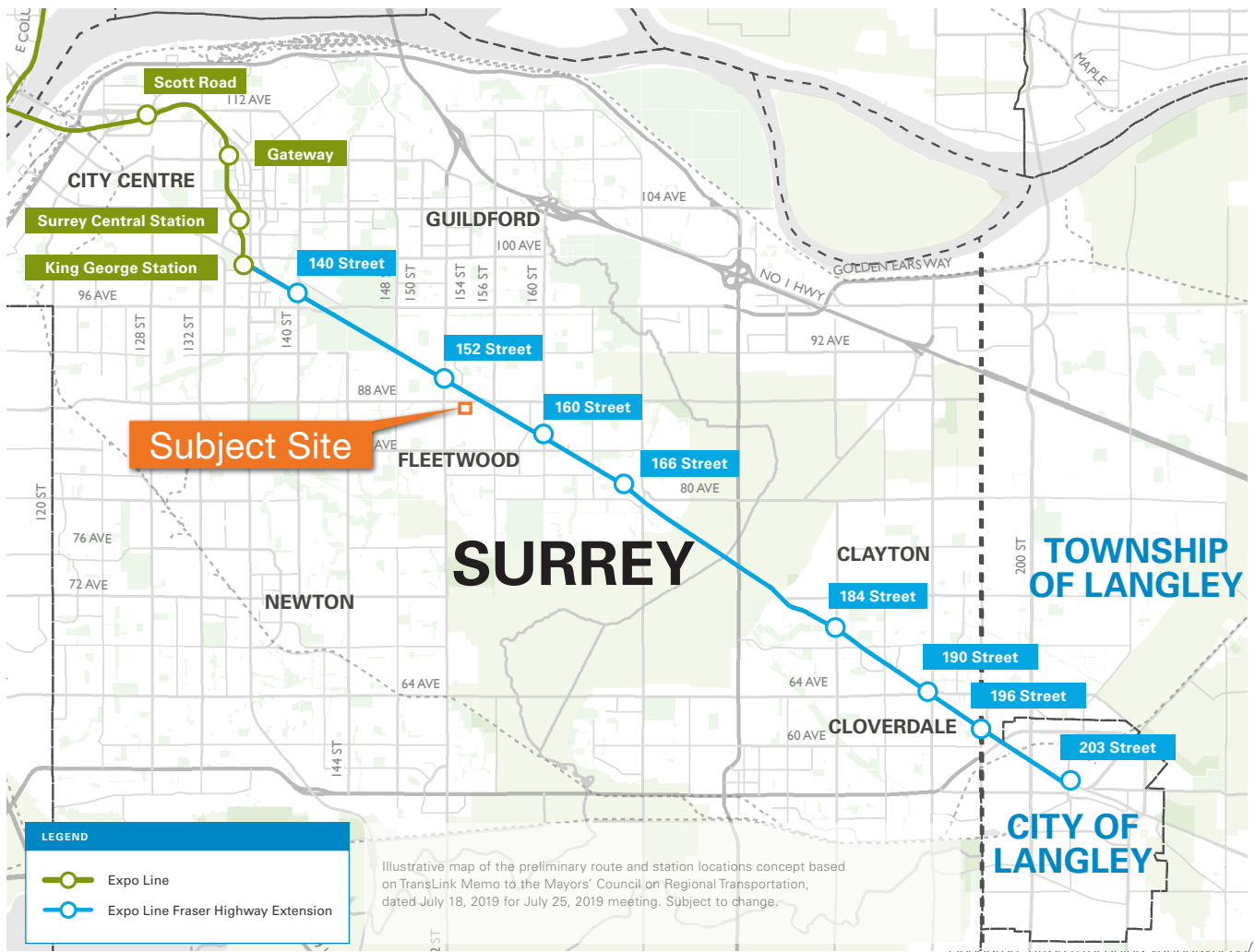
Resource: Fleetwood OCP/ Cith of Surrey
<https://www.surrey.ca/city-services/15221.aspx>

THE OPPORTUNITY

LOCATION

Surrey Langley Skytrain

Pending final senior government approvals, construction of Surrey Langley Skytrain is set to begin in early 2022.



Jerry H. Lee PREC*
604.229.5888
jerry@londonpacific.ca

**LONDON
PACIFIC**
REDEFINING LAND

LONDON PACIFIC PROPERTY AGENTS INC. | T 604 420 2600 F 604 420 2206 | LONDONPACIFIC.CA

E & O.E.: All information contained herein is from sources we deem reliable, and we have no reason to doubt its accuracy; however, no guarantee or responsibility is assumed thereof, and it shall not form any part of future contracts. Properties are submitted subject to errors and omissions and all information should be carefully verified. All measurements quoted herein are approximate. * Personal Real Estate Corporation

This publication is the property of London Pacific Property Agents Inc. and is protected by domestic and international copyright, trade name and other laws, and other rights unless otherwise specified. Any modification, reproduction, alteration or adaptation is strictly prohibited. © London Pacific Property Agents Inc. reserves all rights.